

Böhm
ORGELN | KEYBOARDS

SEMPRA 3.0 *PRO-LIB*

Installation and playing instructions



www.boehm-organs.com

Software pack Band4You for SEMPRA 3.0 instruments – installation and playing instructions

version 1.00

item-no. 42621AE

stand: 10.11.2025

The information contained in this documentation is subject to change without notice and does not constitute any obligation on the part of Keyswerk Musikelektronik GmbH.

The description is based on the information available at the time of printing.

We reserve the right to make changes to the technical details described in this manual, including specifications and illustrations.

Keyswerk Musikelektronik GmbH cannot accept any liability for program errors or incorrect information in the documentation and their consequences.

Please note that the information in this documentation is subject to change without notice.

© Keyswerk 2025

All rights reserved

Responsible for the content

KEYSWERK Musikelektronik GmbH

Sülbecker Str. 20-22

31688 Nienstädt

Tel.: 05722 - 905088

web: <http://www.keyswerk.de>

e-mail: info@keyswerk.de

content

This offers Band4You.....	4
Requirements for the use of Band4You	4
Sound bank Sound4You 2.....	4
More than 1.400 registrations	5
Arpeggio Bank 4.....	5
Style Player Band4You.....	6
Installation of Band4You	7
1. SEMPRA firmware update	7
2. Check and, if necessary, update the AMADEUS Pro-D firmware.....	8
Updating the AMADEUS Pro-D firmware	9
Updating the D-MiX firmware	10
3. Installation of additional data for the Band4You package.....	11
Existing or new account?.....	11
Install Band4You data.....	14
Appendix 1: Sound4You 2 Sound list with notes (Firm SONG bank 108):.....	16
Appendix 2: New Pedal bass sounds on firm sound bank 114 (ACC4):.....	18
Appendix 3: 64 Arpeggios in the firm arpeggio bank 104 Arpeggios4You:.....	18
Appendix 4: Firm SONG bank 130 Sound-Basics 2:.....	19

This offers Band4You

A Böhm SEMPRA organ or SEMPRA keyboard is your personal band! With the **Band4You** software package, your SEMPRA “musicians” are now even better—even more musical!

The **Band4You** software package for SEMPRA 3.0 includes:

- The new **Sound4You 2** sound bank with 128 new sounds and 5 new pedal bass sounds in Sound Bank 114 (for a total of 133 new sounds).
- Innovative **new ART articulation functions** in the new sounds, intuitively controllable.
- Another **Sound Basics SONG bank** with registrations based on the new sounds.
- The new **Arpeggiator Bank 4**, consisting of 64 arpeggio sets with 4 templates each.
- A comprehensive update for the automatic accompaniment with many enhancements and some new arrangements for the more than 300 factory styles (Styleplayer **Band4You**).
- more than 1200 revised **Style Basics registrations** (one-touch).

Requirements for the use of Band4You

Band4You can be used without restrictions on all SEMPRA instruments equipped with 3.0 Pro-Lib and the operating system update “30 Years of DirkJan Ranzijn on Böhm.” See also the installation instructions on pages 11 and 12 of this manual.

Sound bank Sound4You 2

The basis for **Band4You** is the completely new sound bank **SoundsYou 2**, featuring 128 new sounds. The range extends from acoustic guitars, electric guitars, and electric pianos to Saxophonees, trumpets, choirs, and synthesizers.

Many of the new sounds use the internal DSP effects of the AMADEUS Pro sound generation (FX sounds). In addition, some of the **Sound4You 2** sounds offer new ART articulation functions. For example, the foot switch function can be used to fade in sound elements such as an overblown Saxophonee or a downward pull of the note when the key is released in a targeted and convenient manner. These sounds are marked accordingly in the sound names, e.g., with the addition of “...Ped.” (pedal). In the sound list in the appendix, you will find more detailed information on the use of these functions for the corresponding sounds.

Many of the new sounds are perfectly presented in the equally new registration bank **Sound Basics 2**. Some of the new articulation functions are also shown here. You will also find the new sounds in several of the one-touch registrations (Style Basics)..

In addition to the 128 sounds in the new Sound4You 2 sound bank, there are also 5 new pedal basses in sound bank 114 (ACC4).

A list of all new sounds can be found in the appendix to this user manual.

More than 1.400 registrations

Our musicians have adapted and rearranged many of the factory registrations in the Sound Basics, SEMPRA Songs, and Style Basics sections to suit the new sounds and Arpeggio Bank 4. The installation data includes new versions of the following factory SONG banks:

101	=	Sound Basics 1
102...105	=	Style Basics 1...4 (Style-specific one-touch registrations)
106...109	=	Sempre Songs 1...4 (song related registrations)
119	=	Style Basics 5

A brand new second Sound Basics bank has been added, focusing in particular on the new Sounds 4 You 2 sounds.:

130	=	new Bank Sound Basics 2 (sound-specific registrations)
------------	---	---

With the above-mentioned SONG banks, Band4You provides a total of more than 1,400 new or newly arranged registrations, allowing you to conveniently enrich your own repertoire and immediately discover new sounds and arpeggios.

Combine to your heart's content and rely on perfectly balanced volume levels, function and effect settings.

All registrations for the more than 300 factory styles (Style Basics) have also been edited. New bass sounds for pedal playing, optimized tuning of the effects components, and the assignment of arpeggios (now also from the new Arpeggiator Bank 4, which is also included in Band4You) have been added to the new presets..

Arpeggio Bank 4

The new Arpeggiator Bank 4 (Firm Arpeggio Bank 104) has a lot to offer musically. Among other things, Claus Riepe has contributed additional synth arpeggios. The movie arpeggio sets are also outstanding and invite improvisation. These and many other classic and standard arpeggio sets impressively demonstrate how effectively the two SEMPRA accompaniment machines—style player and arpeggiator—can be combined.

The arpeggiator is not always active immediately when a registration is called up, but it is always perfectly prepared. Simply switch it on as needed or according to your taste to enhance your sound. A perfectly matched arpeggio will always enrich your music.

A list of the arpeggios included in the new Arpeggio Bank 4 can be found in the appendix.

Style Player Band4You

The Böhm SEMPRA offers uniquely versatile and intuitive editing options for both of its accompaniment sections. This allows you to customize the existing accompaniments to suit your needs, exchange patterns and templates between styles and arpeggios, or even import new patterns, styles, or arpeggio templates without having to use external PC software.

These fantastic possibilities continue to inspire our musicians. This has resulted in new collections such as Template Package 3 with its extensive selection of GST guitar templates, which has been available since spring 2025. Many of these new templates now even have a length of 8 bars. These new templates and the option of using two breaks and two bridges in each style have now been used for the more than 300 factory styles.

This has resulted in the new **Band4You Style Player** with a comprehensive update for the more than 300 factory styles of SEMPRA 3.0. But don't worry: all styles are still in their usual position, and the names and characters have of course remained the same. Your own presets will therefore continue to work and benefit directly from the improved sound of all factory styles in the new Band4You version.

The following points, among others, are new:

In numerous accompaniments, the number of bars per style variation has been expanded from as few as 2 bars to up to 8 (!) pattern bars. This creates space for additional rewarding, subtle, but by no means intrusive accents (e.g., ghost notes) in the drums.

In addition, the new GST guitar templates mentioned above now have enough space to play to their full extent (in some cases even varying with seventh Chords).

Here and there, new scores for bass, guitar, and piano runs as well as pads have also been recorded. Particularly noteworthy is the optimized dynamics for drums and guitars. The mixing of volume ratios and reverb levels has also been optimized and readjusted in each style.

Each of the more than 300 factory styles now has **two breaks** and **two bridges**. In some styles, new 4- or 8-bar scores have been recorded for bridge 2 (for variations 3 and 4). Bridge 1 (for variations 1 and 2) is still predominantly one bar long. The Break 1 patterns are mostly more subtle to match variations 1 and 2, while the Break 2 patterns for variations 3 and 4 are more "lavish".

These measures make the entire style accompaniment even more lively, and your SEMPRA backing band even more authentic. Of course, it still gives you plenty of freedom to play your own music! The Band4You Style Player does not dominate you, but skillfully supports your playing like a real backing band.

Installation of Band4You

You will receive the **Band4You** software package as usual, either directly on a USB stick or as an archive file via email. In addition to the actual package, you will also receive the latest firmware versions for the SEMPRA itself, as well as for the AMADEUS Pro sound module(s) and the D-MiX preamplifier. Of course, updating this operating system is only necessary if the versions currently installed on the corresponding modules do not yet correspond to the version supplied with **Band4You**.

Please note: If you received the firmware files and the Band-4-You package as an “arc” file (archive file) via email, please first copy all files on your PC to the top directory of your factory data stick (or another USB stick, which must be formatted on your SEMPRA).

When you insert the stick into the SEMPRA, the system recognizes the archive file and asks you whether you want to unzip the archive.

Confirm with **ENTER**. The installation data for the Band-4-You package will now be transferred to the existing or new “Installation” folder, from where the data can then be installed.



We recommend that you delete the arc file from the USB stick after installation, otherwise you will be asked to unzip the file every time you insert the stick in the future.

1. SEMPRA firmware update

If the SEMPRA firmware (.BOS file) on the stick is more recent than the version currently installed on the instrument, SEMPRA automatically detects the presence of the new firmware version and the display asks whether the new version should be installed.

- First, perform this update as usual by confirming the query with **[ENTER]**.
- Then restart SEMPRA once so that the instrument works with the new firmware..



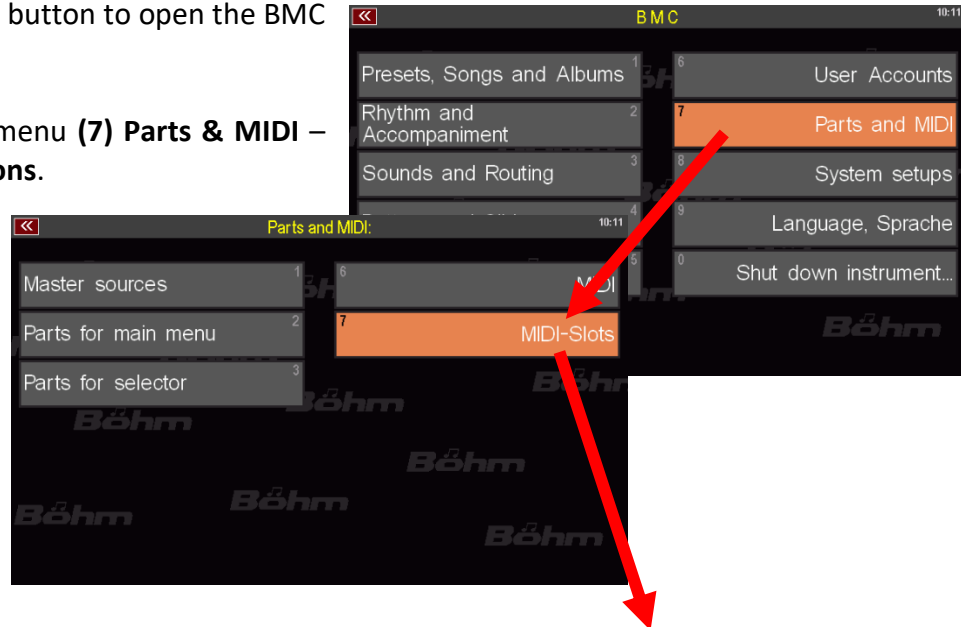
Note: The Band4You package comes with SEMPRA firmware version dated at least October 1, 2025.

2. Check and, if necessary, update the AMADEUS Pro-D firmware.

Now we will first check the currently installed operating system versions for the AMADEUS Pro-D sound module(s). The Band4You package requires at least an **AMADEUS Pro-D operating system version 1.4 from August 21, 2025**.

Press the **[MENU]** button to open the BMC menu.

Here, call up the menu **(7) Parts & MIDI – (7) MIDI connections**.



This menu displays, among other things, the mixer and sound modules contained in your SEMPRA, along with their version numbers and software statuses.

Attention: For the AMADEUS Pro-D sound modules, two lines are listed for each module (for the respective 2 MIDI inputs a) and b).

name:	slot/device:	software version	status
Master	2x61 keys, solo, upper	76 keys, lower split	
ACC	Acc. 1	Master	
Sequencer	Seq. 1	Master	
Panel	I-BUS1a-Panel	Panel & Keyboard 0.2/1.60	071224
Mixer	I-BUS2a-SY 2	SEMPRA D-MiX - Vers 1.4	120224
SG 1a	I-BUS2a-SG 1a	Anadeus Pro-D! Vers 1.4	040725
SG 1b	I-BUS2a-SG 1b	Anadeus Pro-D! Vers 1.4	040725
SG 2a	I-BUS2a-SG 2a	Anadeus Pro-D! Vers 1.4	040725
SG 2b	I-BUS2a-SG 2b	Anadeus Pro-D! Vers 1.4	040725
Sinus	I-BUS2a-SY 1	HX3.5 RealOrgan V. 5.633	10012021
SG 3a	I-BUS2b-SG 1a	Anadeus Pro-D! Vers 1.4	040725
SG 3b	I-BUS2b-SG 1b	Anadeus Pro-D! Vers 1.4	040725
SG 4a	I-BUS2b-SG 2a	Anadeus Pro-D! Vers 1.4	040725
SG 4b	I-BUS2b-SG 2b	Anadeus Pro-D! Vers 1.4	040725
Synth	I-BUS2b-SY 1	Anadeus Pro-D! Vers 1.4	040725

In this example, software version **1.4 dated August 21, 2025** is already displayed for the AMADEUS Pro-D modules. An update is therefore not necessary. If your SEMPRA currently still displays an older software version for the AMADEUS Pro-D module(s), the AMADEUS firmware must first be updated.

While you are doing this, please also check the currently installed firmware version of the **D-MiX** preamplifier: As shown in the example image above, at least version **1.4 from February 12, 2024** should be installed. This installation was usually already carried out with the SEMPRA 3.0 upgrade.

If, in exceptional cases, an older version is still displayed, please also update the firmware for the D-MiX as described below.

Updating the AMADEUS Pro-D firmware

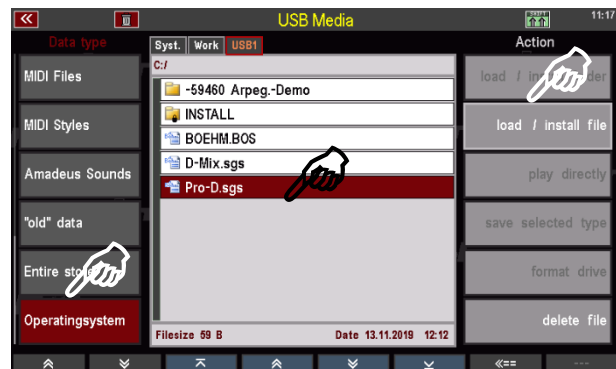
The latest operating system files for AMADEUS Pro-D (and also for the D-MiX preamplifier) are included in the scope of delivery for Band4You.

However, this data can also be downloaded from the Böhm website:

<https://www.keyswerk.de/software/#s>

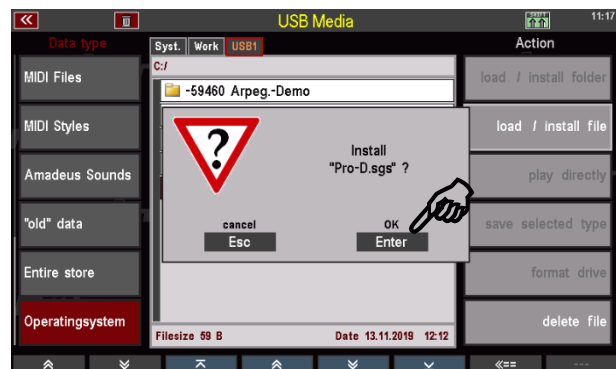
- We assume that the relevant data is now available on your **Band4You** installation stick. Now insert the stick into the SEMPRA and press the **[USB]** button to open the USB menu.

- Scroll down the left-hand column of the display showing the file types until the Operating System entry appears. Tap on it and the field will turn red.

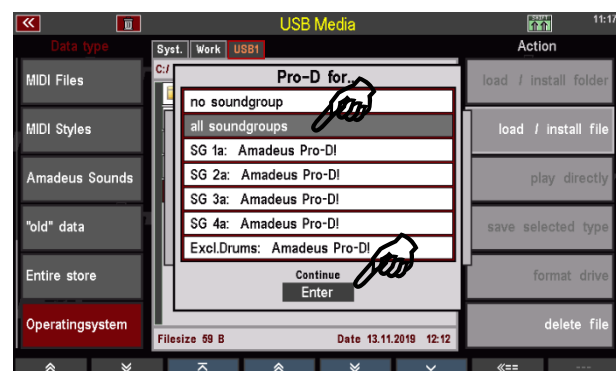


- First, place the cursor on the file **Pro-D.sgs** and then tap on the **Load/Install file** field on the right.

- Confirm the security prompt with **[Enter]**.



- If there is only one AMADEUS Pro-D module in your SEMPRA, the installation of the new firmware will start immediately. You can follow the progress on the display. If several AMADEUS Pro-D modules are available, you will first be asked for which module the update should be installed:



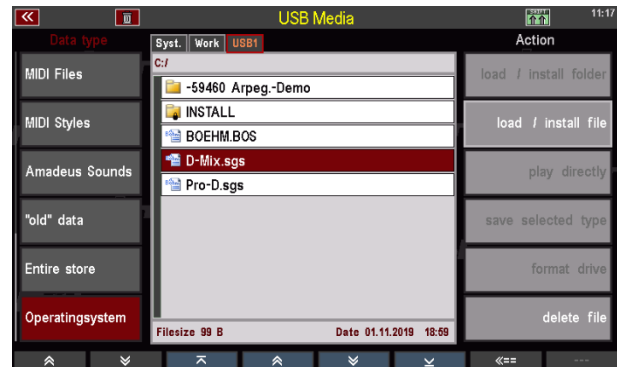
- Select the line **"All sound groups"** and confirm with **[Enter]**. This ensures that all existing modules receive the update at the same time. The update is now running and can be tracked on the display.

- When the gray progress box disappears, the update is complete.

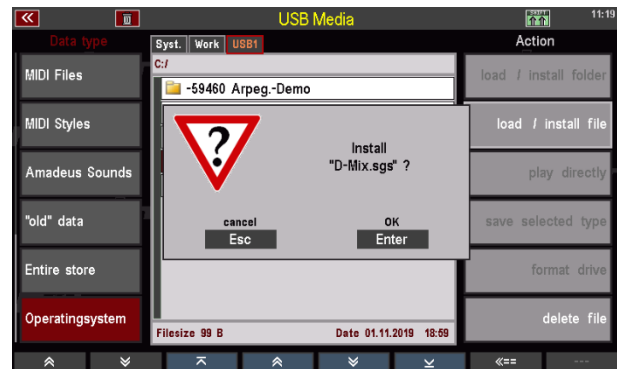
Updating the D-MiX firmware

As mentioned above, you should now also update the firmware for the D-MiX preamplifier of your SEMPRA, if necessary, if the above version query shows a version older than version **1.4 from February 12, 2024**. However, this update is normally already installed with the SEMPRA 3.0 upgrade.

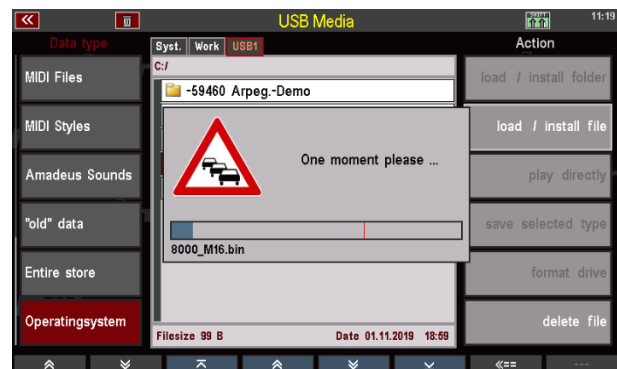
- Falls die D-MiX Firmware zu aktualisieren ist, setzen Sie den Cursor im USB-Menü (Dateityp **Betriebssystem** muss links noch angewählt sein) nun auf die Datei **D-Mix.sgs** und tippen wiederum rechts auf das Feld **Datei laden/installieren**.



- Bestätigen Sie die Sicherheitsabfrage mit **[Enter]**.



- Die Firmware für den D-MiX wird nun installiert.



- Bitte schalten Sie die SEMPRA nach dem Abschluss des Updates (die Verlaufsbox wird wieder ausgeblendet) einmal aus und wieder ein. Die Module arbeiten nun mit den neuen Firmware-Versionen.

3. Installation of additional data for the Band4You package

Now that SEMPRA itself and the AMADEUS Pro-D sound modules are ready for **Band4You**, we can install the actual data for the package, i.e. the new sounds, the SONG presets, the new versions of the factory styles, and the new arpeggios in Arpeggio Bank 4.

Attention: This data is always installed on a per-account basis! You must therefore perform the following installation separately for each user account in which **Band4You** is to be available.!

Existing or new account?

The question arises as to whether **Band4You** should be installed in a new or an existing SEMPRA 3.0 user account or accounts.?

Installation in existing 3.0 accounts

With the exception of any existing sacred accounts with the BBO Laudate package (see below), you can install **Band4You** without hesitation in an existing SEMPRA 3.0 user account containing the previous 3.0 factory data (3.0 sounds, SONG registrations, styles, and arpeggios) are included, as well as the data from the "**30 Years of DirkJan Ranzijn on Stage with Böhm**" package and, of course, your own user data.

ATTENTION: The "30 Years..." anniversary package must be installed before installing Band4You. Some of the data will be replaced by newer versions during the subsequent installation of Band4You (SONG bank "Sound Basics 1").

If you have not already done so, or if you purchased the "30 Years of DirkJan Ranzijn..." package together with the **Band4You** package, please install the "30 Years..." package first as described in the installation instructions provided there, and only then install the **Band4You** package. This ensures that all data is up to date after installation.

ATTENTION: Band4You must not be installed on Sakral accounts with the BBO Laudate software, as this may lead to data conflicts! However, this is not necessary, as Band4You does not contain any relevant data for sacred organ playing.

When you install **Band4You**, the previous 3.0 factory data (SONGs and presets, styles) will be overwritten with the new Band4You versions. In addition, further additional data will be added to previously free positions (SONGs, sound presets).

If you also have the Arpeggiator or Arpeggiator Pro, the existing factory arpeggio banks 1...3 remain, and the new arpeggio bank 4 from the **Band4You** package is added. This means that 4 factory banks with arpeggios are then available.

The advantage of installing this in an existing account: The new **Band4You** data is immediately available in your existing account, allowing you to add the new Sound4You 2 sounds or arpeggios from the new Arpeggio Bank 4 directly to your own registrations. Your own SONG presets will now also automatically access the new **Band4You** versions of these styles, provided that they use styles from the standard factory banks.

But: Factory positions (SONGs, styles, etc.) that you have modified yourself and saved in their original positions now contain the user data you have created. This user data, e.g., SONGs with modified presets or user styles modified in factory positions, may “overlay” the newly installed **Band4You** versions in these locations. In these positions, you will continue to hear your own user version after calling it up and not the “underlying” new **Band4You** version.

In order to access the new versions here, you must first move such user SONG files or styles to free spaces in the actual user banks and then delete your user versions from their original locations. Only then will the new **Band4You** versions appear in these locations and be ready to play.

Installation into a new account

In order to enjoy the full content of the new Band4You data, or to simply have a “clean” new **Band4You** account available in addition to other accounts, it is advisable to install **Band4You** - at least additionally - in a new user account (your previous accounts will still be available to you as before).

A tip: It is generally advisable to maintain such a “clean” and fully equipped factory data account with all factory data belonging to your SEMPRA (except for BBO church/theatre organ, which should be separated into its own account) on the SEMPRA – and to add newly purchased software packages such as **Band4You** to this account. This way, you always have a clean account with all the factory data for your organ at your fingertips and can use it as a starting point for new user accounts, for example, by simply duplicating it.

What to install into a new account?

The **Band4You** data completely replaces the previous SEMPRA 3.0 standard factory data in the areas of SONG registrations and styles. With the installation of Band4You, the previous 3.0 registrations (Sound Basics, SEMPRA Songs, Style Basics) and factory styles are available in the new version, as well as new data such as the new SONG bank “Sound Basics 2”.

ATTENTION: The anniversary package "30 Years of DirkJan Ranzijn on Stage with Böhm..." is a prerequisite for Band4You. This package should be installed before installing Band4You. Some data from this package will be replaced by newer versions during the subsequent installation of **Band4You** (SONG bank "Sound Basics 1"). Other data from the 30 Years... package will remain from the installation there and will be supplemented by the **Band4You** data. So there will be no replacement here!

If you have not already done so, or if you purchased the "30 Years of DirkJan Ranzijn..." package together with the **Band4You** package, please first install the "30 Years..." package in your new account as described in the installation instructions there, and only then install the **Band4You** package.

This ensures that all data is up to date after installation.

In addition, **Band4You** installs the new Arpeggio Bank 4. The previous Arpeggio Banks 1..3 (included in the basic installation of the Arpeggiator or Arpeggiator Pro) remain unchanged and valid.

To ensure that all 4 arpeggio banks are available in a new account with the **Arpeggiator/Pro app**, the data for the arpeggiator must be reinstalled in addition to the **Band4You** data.

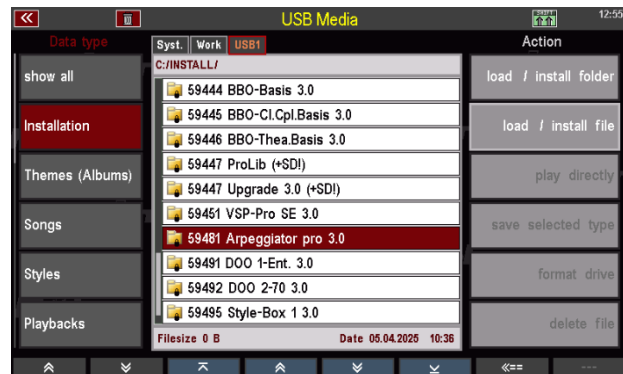
When creating a new user account that should contain all standard factory data and Band4You, proceed as follows:

Step 1:

Set up the new account via the BMC menu **[6] User accounts – [2] Create a new account** and start this new - still empty - account.

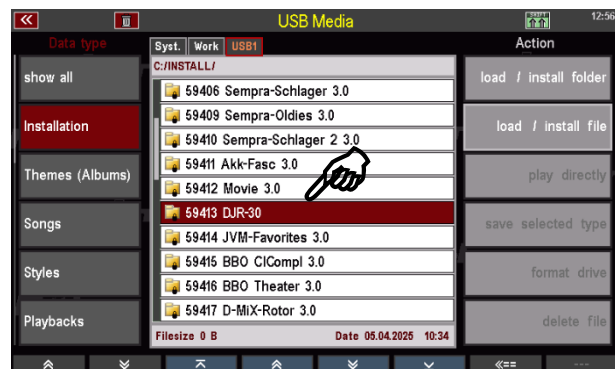
Now, depending on your arpeggiator version, install the corresponding data folder from your SEMBRA 3.0 installation stick.

59461 for Arpeggiator, or
59481 for Arpeggiator Pro.



Step 2:

Now install the data from the package "30 Years of DirkJan Ranzijn on Stage with Böhm" (folder 59413) from your corresponding installation stick..



Step 3:

Only now should you install the data for the **Band4You** package as described in the following chapter.

You can install any other data folders from optional software packages into your new account as before; they will not be affected by the **Band4You** installation.

ATTENTION: After installing Band4You, the folders **59400**, **59401**, **59402**, and **59403** from the **3.0** installation stick **must not be installed in the same account again!** This would overwrite data from the Band4You package with the earlier versions from the 3.0 standard package!

But don't worry: if this does happen accidentally, simply reinstall the Band4You data in the affected account as described in the following chapter. This will restore the corresponding factory data to the latest Band4You version.

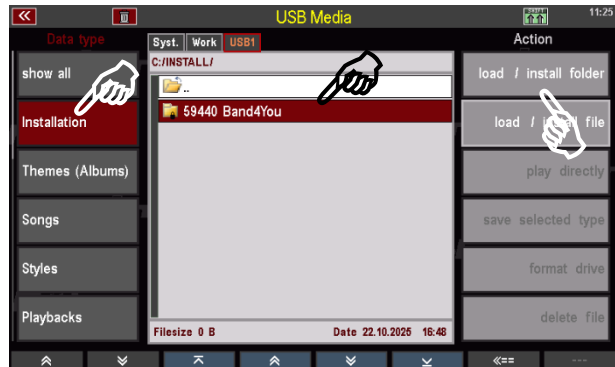
Install Band4You data

Now let's move on to the actual installation of the **Band4You** data. We assume that the user account in which you now want to install the data (see notes above) is now open and the USB stick with the installation data for **Band4You** is inserted.

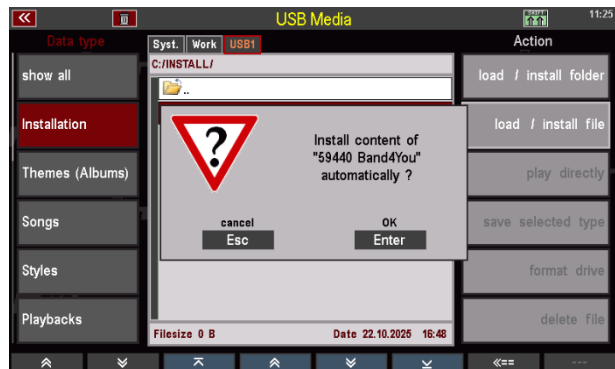
- Tap the **[USB]** button to open the USB menu.
- Tap the **Installation** field in the File Type column on the left side of the display.

- The contents of the installation folder are listed in the center of the display. Use the cursor keys to move the cursor to the folder **59440 Band4You**.

- Now tap on the **Load/Install Folder** field on the right.

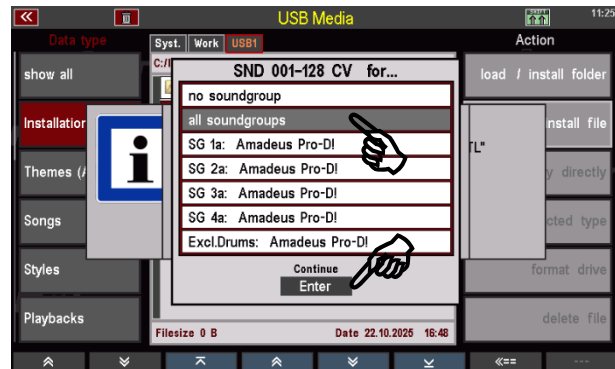


- The display asks whether the data should really be installed. Confirm the query with **[Enter]**.



- The installation of the data will now begin. First, the new style banks will be installed. You can follow the progress of the individual styles on the display.
- The sound data for the new sounds follows. These are now installed in the AMADEUS Pro-D sound module(s). If your SEMBRA is equipped with only one AMADEUS Pro-D module, the corresponding installation will start immediately.

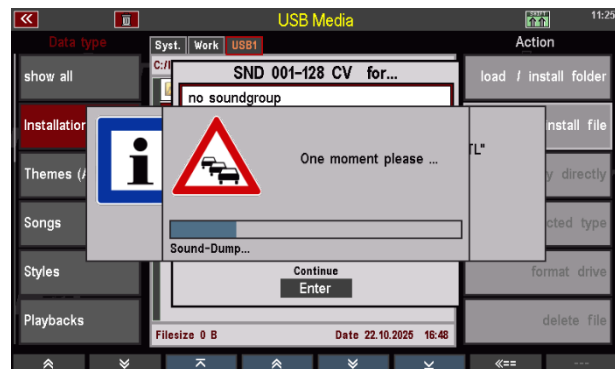
- If at least two AMADEUS modules are available, you will first be asked into which module the data should be loaded.
Select "**All Sound Groups**" with the cursor and confirm with **[Enter]**. This ensures that the new sounds will later be available on all sound modules.



The installation of the new sound data is now running, followed by the installation of the new arpeggios and SONG banks.

You can track the progress of the installation on the display.

Once the installation is complete, the gray progress box will disappear.



This completes the installation of the **Band4You** package. The new data is now ready to play.

You can now repeat the installation for other user accounts as necessary.

Here's another tip: It is not necessary to reinstall the sound data for AMADEUS each time you install a new account with the **Band4You** package. It is sufficient to load the sound data into the AMADEUS module(s) of your SEMPRE once during the initial installation.

This means that when you install **Band4You** later, e.g., in additional accounts, you can install only the data necessary for those accounts and shorten the installation process.

To do this, tap Installation in the USB menu on the left, then tap the 59440 Band4You folder to open it. You will now see the subfolders it contains. Only install the **ARPEGGIO**, **SONGBANK**, **SOUNDPRE**, and **STYLE** folders by selecting them and clicking **Load/Install Folder** on the right to start the installation.



The **AMADEUS** folder does not need to be reinstalled.

Appendix 1: Sound4You 2 Sound list with notes (Firm SONG bank 108):

bank	sound	name	category	group	articulation
008	001	70th WahWah E	Strums	E-Guitar	
008	002	60sShad.Echo sFX	Strums	E-Guitar	
008	003	SuperSoftClnGit.	Strums	E-Guitar	
008	004	FlangerClnGit.FX	Strums	E-Guitar	
008	005	Cln.Git.Echo sFX	Strums	Unplugged	
008	006	Rene'sNyl.dyn.	Strums	Unplugged	
008	007	Rene'sNyl.dyn.FX	Strums	Unplugged	
008	008	Rene's Nyl.hard	Strums	Unplugged	
008	009	Country-Monica +	Accordions	Harmonica	Slide (raising the pitch) by heavy velocity
008	010	Alpino Echo sFX	Accordions	Tremolo	
008	011	Accord.Echo sFX	Accordions	Register	
008	012	Bassoon pop. FX	Reeds	Bassoon / Oboe	
008	013	Oboe Echo sFX	Reeds	Bassoon / Oboe	
008	014	Oboe soft FX	Reeds	Bassoon / Oboe	
008	015	Whistler 3 sFX	Voices	Special	
008	016	Singing Saw	Strings	Special	
008	017	AltoSax duo 2 +	Reeds	Saxophone	Slide (raising the pitch) by heavy velocity
008	018	AltSaxVib+ Ped-	Reeds	Saxophone	Slide by heavy velocity, Fall by sustain pedal
008	019	AltSax duo 2 sFX	Reeds	Saxophone	
008	020	Tenor-Sax Ped+	Reeds	Saxophone	Sustain pedal during the tone: Fall, before the tone: Slide
008	021	Tenor-Sax duo +	Reeds	Saxophone	Slide by heavy velocity
008	022	Sax Ped.Growl	Reeds	Saxophone	
008	023	Sax Ped.Growl +1	Reeds	Saxophone	Sustain pedal switches between "smooth" and "overblown"
008	024	Sax Set 3	Reeds	Combi	
008	025	SchlagerTrp1 sFX	Brass	Trumpet	
008	026	SchlagerTrp2 sFX	Brass	Trumpet	
008	027	MtdJazzWah Touch	Brass	Trumpet	Aftertouch opens the trumpet damper
008	028	MtdJazzWah Mod.	Brass	Trumpet	Modulation wheel opens the trumpet damper
008	029	MtdJz.growl Tch.	Brass	Trumpet	Overblowing controllable via aftertouch
008	030	MtdJz.Trp.Set	Brass	Combi	
008	031	MtdJz.Ped.Wah	Brass	Combi	Sustain pedal triggers wah effect (damper movement)
008	032	Trumpet porta	Brass	Trumpet	Portamento when playing legato
008	033	Tromb.sft.Ped+FX	Brass	Trombone	Slide by sustain pedal
008	034	Tromb.sft.Ped+	Brass	Trombone	Slide by sustain pedal
008	035	Tromb.dyn Ped+	Brass	Trombone	Slide by sustain pedal
008	036	Bigband swell 1	Brass	Combi	Anschwellen des Sounds abhängig vom Tempo der Begleitung
008	037	Bigb.swell Ped.-	Brass	Combi	Fall by sustain pedal
008	038	4 Trumpets	Brass	Combi	
008	039	Bigband Brass	Brass	Combi	
008	040	Trb.sft.Porta.FX	Brass	Trombone	Portamento when playing legato
008	041	Cello classic	Strings	Cello / Bass	
008	042	Cello cl.Echo FX	Strings	Cello / Bass	
008	043	Cello class Ped-	Strings	Cello / Bass	Fall by sustain pedal
008	044	Violin+Strings	Strings	Combi	
008	045	Cello+Str. Ped-	Strings	Special	Fall by sustain pedal
008	046	St.Strings f/s	Strings	Orchestra soft	
008	047	Str.Orch.Marcato	Strings	Orchestra hard	
008	048	Strgs.Ped.Brass	Strings	Special	Sustain pedal adds a brass sound
008	049	Art.Choir 1	Voices	Special	Vocal accents depending on the number of keys
008	050	Art.Choir 2	Voices	Special	Vocal accents depending on the number of keys
008	051	Voice Uuh strght	Voices	Solo	Vocal accents depending on the number of keys and pitch
008	052	Voice art. Duh	Voices	Solo	Vocal accents depending on the number of keys and pitch
008	053	Uhh Bap Dahh dyn	Voices	Choir dynamic	Vocal accents depending on the velocity
008	054	Baah-Sing.rhyt.	Voices	Special	Swelling depending on the tempo of the accompaniment
008	055	Exc. Choir a	Voices	Choir	Vocal accents depending on the number of keys
008	056	Choir+Solo FXa	Voices	Special	Solo voice on the third key played simultaneously
008	057	Guitar-Pad 1	Strums	Combi	
008	058	Guitar-Pad 2 FX	Strums	Combi	

008	059	Guitar-Pad 3	Strums	Combi	
008	060	Guitar-Pad 4 FX	Strums	Combi	
008	061	Guzheng perc.	Strums	Ethnic	
008	062	Guzheng on-off	Strums	Ethnic	With key-off sample
008	063	Simple Harp	Strums	Ethnic	
008	064	Ac.Guit.dyn.1 FX	Strums	Unplugged	
008	065	Piano med. sFX	Pianos	Piano	
008	066	PopGrand Chr. FX	Pianos	Grand Piano	
008	067	Pop-Grand clean	Pianos	Piano	
008	068	Theatre Piano	Pianos	Piano	
008	069	Tivoli Piano	Pianos	Piano	
008	070	Grand + Strings	Pianos	Combi	
008	071	Schlager Piano 1	Pianos	Combi	
008	072	Schlager Piano 2	Pianos	Combi	
008	073	Dires Git.sft.	Strums	E-Guitar	
008	074	Dires Git.hrd FX	Strums	E-Guitar	
008	075	60s Dist.1 sFX	Strums	Rock-Guitar	
008	076	60s Dist.2 sFX	Strums	Rock-Guitar	
008	077	LeadGuit.Echo FX	Strums	Rock-Guitar	
008	078	MikesOldGit.1 FX	Strums	E-Guitar	
008	079	MikesOldGit.2 FX	Strums	E-Guitar	
008	080	Guitar-Pad 5 FX	Strums	Combi	
008	081	70th FltSyntPerc	Synthesizer	Effect synth.	
008	082	LeadSynt.Echo FX	Synthesizer	Lead synth.	
008	083	Vangelis CS80	Synthesizer	Lead synth.	
008	084	Vangelis CS80 FX	Synthesizer	Lead synth.	
008	085	Vange.CS slow FX	Synthesizer	Lead synth.	
008	086	Vang.CS Ens. FX	Synthesizer	Lead synth.	
008	087	PulstarLead FX	Synthesizer	Lead synth.	
008	088	TriangleEcho sFX	Synthesizer	Lead synth.	
008	089	LeadBrass	Synthesizer	Lead synth.	
008	090	LeadBrass swell	Synthesizer	Lead synth.	
008	091	LeadBrass Pad	Synthesizer	Pad synth.	
008	092	LeadBrass bright	Synthesizer	Lead synth.	
008	093	SqareLead mod.FX	Synthesizer	Lead synth.	
008	094	Model's Lead FX	Synthesizer	Lead synth.	
008	095	Phaser Lead FX	Synthesizer	Lead synth.	
008	096	SquarePad mod.FX	Synthesizer	Pad synth.	
008	097	Tiny E-Piano 1	Pianos	E-Piano	
008	098	Tiny E-Pno.trem.	Pianos	E-Piano	
008	099	Tiny EPno.tr.chr	Pianos	E-Piano	
008	100	Tiny EP.bright	Pianos	E-Piano	
008	101	Tiny EP.bgt.tem.	Pianos	E-Piano	
008	102	TinyEP.Flange FX	Pianos	E-Piano	
008	103	Tiny EP.Phaser	Pianos	E-Piano	
008	104	Soft Rhodes	Pianos	E-Piano	
008	105	FM-Piano bell	Pianos	E-Piano	
008	106	FM-Piano bright	Pianos	E-Piano	
008	107	FM-Piano dark	Pianos	E-Piano	
008	108	FM-Piano Choir.FX	Pianos	E-Piano	
008	109	E-Piano Mod.Vib.	Pianos	E-Piano	Vibrato via mod wheel, tremolo via aftertouch
008	110	E-Piano promix	Pianos	E-Piano	
008	111	Grand DX	Pianos	E-Piano	
008	112	Grand DX Choir.FX	Pianos	E-Piano	
008	113	FM-Piano Pad 1	Pianos	Combi	
008	114	FM-Pno. Pad 2 FX	Pianos	Combi	
008	115	FM-Pno. Pad 3 FX	Pianos	Combi	
008	116	E-P. Roady + Pad	Pianos	Combi	
008	117	Piano Pad 1	Pianos	Combi	
008	118	Piano Pad 2	Pianos	Combi	
008	119	Syn.E-Pno.Pad 1	Pianos	Combi	
008	120	Syn.E-Pno.Pad 2	Pianos	Combi	
008	121	SynthBellEcho FX	Synthesizer	Effect synth.	
008	122	Ping-Pad Echo FX	Synthesizer	Effect synth.	

008	123	Jitter-Synth	Synthesizer	Effect synth.
008	124	TriangleEch.3sFX	Synthesizer	Lead synth.
008	125	Vang.CS80down FX	Synthesizer	Effect synth.
008	126	Vang.CSdwn.Pd FX	Synthesizer	Effect synth.
008	127	Vang.CS80 up FX	Synthesizer	Effect synth.
008	128	Vang.CSup/downFX	Synthesizer	Effect synth.

Appendix 2: New Pedal bass sounds on firm sound bank 114 (ACC4):

bank	sound	name	category	group
114	115	Olli's E-Bs1 Pd	Basses	Sustain bass
114	116	Olli's E-Bs2 Pd	Basses	Sustain bass
114	117	Upright Bs2 Pd	Basses	Sustain bass
114	118	Pick.B. Fndr Pd	Basses	Sustain bass
114	119	Finger Bs1 Pd	Basses	Sustain bass

Appendix 3: 64 Arpeggios in the firm arpeggio bank 104 Arpeggios4You:

bank	number	name	number	name	
104	001	Arp sequencer 4-synth. CR 1	104	046	Piano Ballad 6 Grand 2-guit. perc.
104	002	Arp sequencer 4-synth. CR 2	104	047	Movie 4 Crime and Toys 2-str. pad bells
104	003	Arp sequencer 4-synth. CR 3	104	048	Slow-Rock Ballad 2 2-guit. arp. perc
104	004	Arp sequencer 3-synth. perc. CR 4	104	049	Movie 2 strings Da Vinci 3-str. synth
104	005	Arp sequencer 3-synth. drums CR 5	104	050	Movie 5 2-arp.synth viol. vocals
104	006	Arp sequencer 4-synth. CR 6	104	051	Movie 3 2-stri. choir crest.cym
104	007	Arp. 80th 1 2-Juno-arp. 2-guit.	104	052	Movie 6 2-guit. perc. cresc.-cymb.
104	008	Arp. 80th 2 2-Juno-arp. 2-guit.	104	053	Beat 6 2-guit. arp.-synth tamb.
104	009	Arp. 80th 3 3-Juno-arp. guit.	104	054	ChaCha mix 2-guit. saxes perc.
104	010	Arp. 80th 4 3-Juno-arp. guit.	104	055	Beat 7 half tempo 2-guit. arp. perc.
104	011	Mystic piano 3-piano arp.-synth.	104	056	Arp. Ballad 5 2-guit. arp.-synth perc.
104	012	Schlager 4 2-guit. arp.-synth tamb.	104	057	Latin mix 3 2-guit. 2-perc.
104	013	Arp. 80th 5 2-guit. arp.-synth. perc.	104	058	Latin mix 2 2-guit. 2-perc.
104	014	Country 5 2-guit. drums tamb.	104	059	5-4 guit. piano sax. perc.
104	015	Orch.-waltz guit. brass 2-glissando	104	060	Waltz christm. 2 guit. harp sleighbells
104	016	Showtune guit. brass pizz. xylo.	104	061	Swing christm. 2-guit. e-pia sleighbell
104	017	Beguine 2 guit. 2-voices perc.	104	062	Beat 5 2-guit. arp.-synth perc.
104	018	Beguine 1 guit. 2-piano perc.	104	063	Samba 3 2-guit. 2-perc.
104	019	Latin mix 6 2-guit. organ perc.	104	064	Funky mix 3 arp.-brass guit. perc. clap
104	020	6-8 Slow-Rock 2-arp-synth. 2-guit.			
104	021	6-8 Slow-Rock 2-picked 2-strum .			
104	022	Slow waltz 7 strum. bs.pick pick harp			
104	023	Slow waltz 6 2-guit. 2-glissando			
104	024	Country-B. slow 1-strum. 2-picked perc.			
104	025	Country-Shuffle 1 3-guit. perc.			
104	026	Swing 10 2-guit. 2-brass			
104	027	Polka 5 brass 2-accent-guit. tamb.			
104	028	Fox 3 2-guit. sax-set brass			
104	029	Soft Reggae 2-guit. perc. claps			
104	030	Pepes party 3 2-gt. arp-brass clap			
104	031	Country 4 1-pick. 2-strum. perc.			
104	032	Beat 8 2-strum. 1-pick. perc.			
104	033	Tango 3 2-guit. accordion perc.			
104	034	Movie 8 2-strings arp.synth. perc.			
104	035	Latin mix 5 2-guit. e-pia. perc.			
104	036	Shuffle 2 piano brass 2-guitars			
104	037	Shuffle 1 2-brass 2-guitars			
104	038	Fox 2 brass sax-set 2-guitars			
104	039	Movie 7 4-strings 4 movie			
104	040	Slow Fox 6 guit. 2-voice snap			
104	041	Slow Fox 5 guit. 2-voice snap			
104	042	Slow waltz 5 2 guit. harp sleighb.			
104	043	6-8 March 2-flute guit. tamb.			
104	044	Entert. 3 guit. 2-arp.-synth. clap			
104	045	Latin mix 4 guit arp.brass brass perc			

Appendix 4: Firm SONG bank

130 Sound-Basics 2:

bank	number	name
130	001	E-Piano soft + FM
130	002	Acoustic Guitars + pads
130	003	E-Guitar
130	004	Articulation
130	005	Brass solo + sets
130	006	Synthesizer
130	007	Voice 2
130	008	Classic orchestra
130	009	E-Piano Pop - Schlager



Keyswerk Musikelektronik GmbH

Sülbecker Str. 20-22

31688 Nienstädt

Tel.: 05722 905088

Internet <http://www.boehm-orgeln.de>

E-Mail info@boehm-orgeln.de