

Böhm
ORGELN | KEYBOARDS

SEMPRA 2.0

Installation and Playing Instructions



www.boehm-organs.com

DOO Style pack 70th/80th Pop for SEMPRA 2.0 – installation and playing instructions

Version 1.00, 31.12.2021

Art.-No. 42392AE

The information contained in this documentation may be changed without announcement and are subject to change without notice by Keyswerk Musikelektronik GmbH & Co. KG does not represent an obligation.

The description contains the current state of information at the time of going to press.

Changes of technical details compared to the descriptions, the information and illustrations in this manual are subject to change without notice.

Keyswerk Musikelektronik GmbH assumes no liability for program errors and for incorrect information in the documentation and its consequences.

© Keyswerk 2021

All rights reserved

Responsible for the content of this website

KEYSWERK Music Electronics GmbH

Warbersche Str. 32

31675 Bückebug

Germany

Phone: 05722 - 905088

Fax: 05722 - 287555

Internet <http://www.keyswerk.de>

E-mail info@keyswerk.de

Content

General	4
Installation.....	4
How to find the DOO data?	5
Overview Style pack DOO 70er/80er Pop	7
STYLES (Firm style bank 15 DOO)	7
SONGS (Firm SONG bank 15: DOO)	7

General

Professional styles are the essence for the entertainer on stage. But also when playing at home they make the thing only "round". With the style package "70th/80thss Pop", which we offer in cooperation with the style manufacturer D-O-O (Direct Online Order), you now get 10 additional top styles for your Böhm instrument, based on corresponding styles from the extensive D-O-O program.

For your SEMPRA 2.0 we have adapted these styles to the fantastic sounds of the AMADEUS sound system of the SEMPRA. The styles are always flexible and can be used for different pieces of music, even though some of them have been chosen for specific titles. And so that you can start playing immediately, you also receive a SONG with 4 matching registrations (One Touch Presets) for each style in this package.

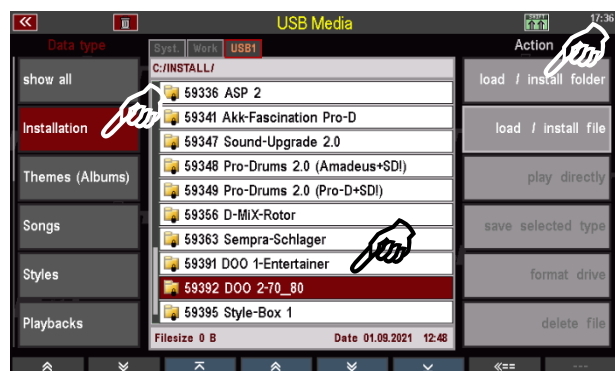
Installation

In addition to the styles, this package also includes a SONG bank (Firm SONG Bank 15) with matching global presets. All data of the package are installed from the USB stick belonging to your SEMPRA with the factory data into the instrument.

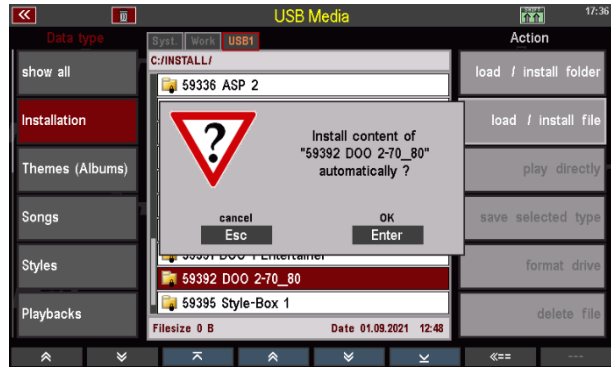
Attention: *If you have received the package as an "arc" file (archive file) by email, please first copy this file on the PC into the top directory of your factory data stick (or another USB stick, but it must be formatted on your SEMPRA). When you insert the stick into the SEMPRA, the system recognizes the archive file and asks you whether the archive should be unpacked. Confirm with [ENTER]. The installation folder for the package "doo 70s/80s Pop" is now created on the stick (we recommend that you delete the arc file from the stick again after the installation, otherwise you will always be asked whether the file should be unpacked when you insert the stick in the future).*

You can now proceed with the actual installation on the SEMPRA:

- Insert the USB stick with the installation data into one of the USB sockets of your SEMPRA.
- Press the [USB] button to open the USB menu in the display.
- Tap the **Installation** data type on the left (the field is displayed in red).
- Move the cursor to the folder „59392 DOO 2-70_80“ with the **data wheel** or the **cursor buttons up/down** (but do not open the folder!).
- Tap on the right on the field "Load/Install folder".
- The display asks whether you really want to install the data. Confirm with [Enter].



- The data will now be loaded. You can then exit the USB menu again (press the **[ESC]** button or the **[USB]** button).
- Now first the styles and then the SONG bank is loaded (see display). After that the installation is finished. The data of the package can now be used.

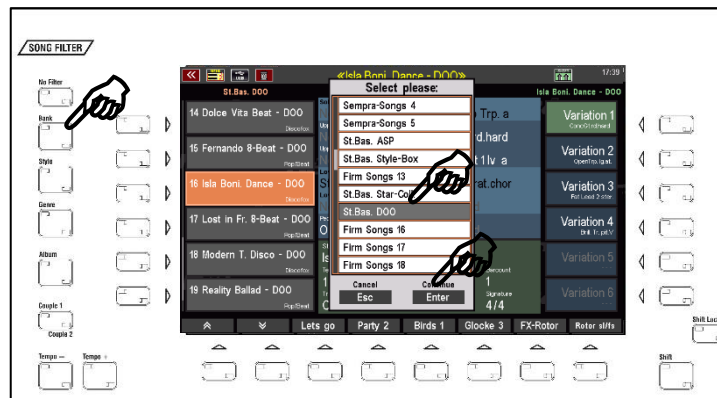


Attention: Please note that factory data, including the DOO packages, are always installed on an account-specific basis. If you use additional user accounts on your SEMPRA and you want to use the DOO styles and SONGS in these accounts as well, you may have to perform the installation again for these additional accounts!

How to find the DOO data?

The „70er/80er Pop“ SONGS with the example presets can be found in the **Firm SONG Bank 15 "St.Bas. DOO"**. Call up this bank e.g. via the SONG filter button **[Bank]** (press 2x, if not already selected) and then scroll to the corresponding bank position.

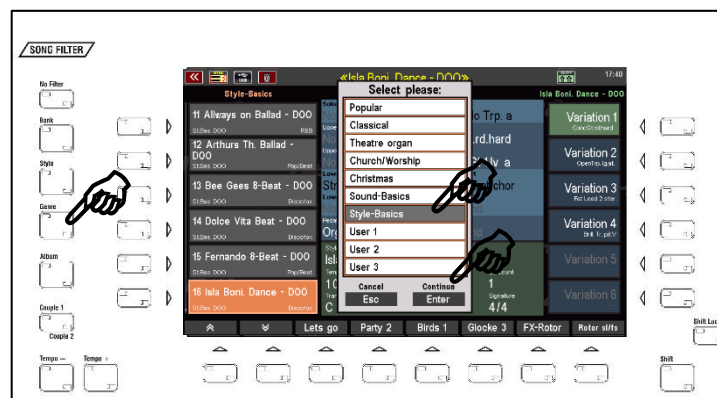
Confirm with **[Enter]**. The SONG list on the left side of the display now shows the DOO SONGS.



Alternatively, you can call up the **STYLE BASICS** genre for the SONG list. All DOO SONGS are assigned to this genre.

To do this, press the SONG filter button **[Genre]** (press 2x if necessary, if not already selected) and select the genre "Style Basics" from the list.

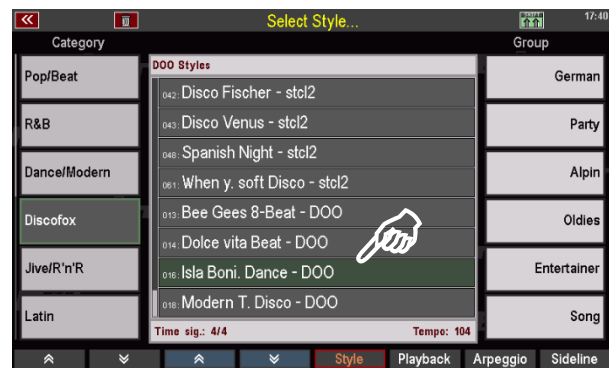
Confirm with **[Enter]**.



The SONG list on the left now shows the SONGS of the genre "Style Basics", here among others the DOO SONGS.

SONGS of the DOO packages can be recognized by the abbreviation **DOO** in the SONG name.

The **DOO STYLES** occupy the firm style bank 15 (DOO). They are assigned to the corresponding categories and subgroups in the style selection. You can recognize DOO styles in the style selection by the abbreviation "**DOO**" in the style name.



Overview Style pack DOO 70er/80er Pop

STYLES (Firm style bank 15 DOO)

Bank	Number	Name
115	011	Always on Ballad - DOO
115	012	Arthur Th. Ballad - DOO
115	013	Bee Gees 8-Beat - DOO
115	014	Dolce vita Beat - DOO
115	015	Fernando 8-Beat - DOO
115	016	Isla Boni Dance - DOO
115	017	Lost in Fr. 8-Beat - DOO
115	018	Modern T. Disco - DOO
115	019	Reality Ballad - DOO
115	020	Saving all m. 6-8 - DOO

SONGS (Firm SONG bank 15: DOO)

Bank	Number	Name
115	011	Always on Ballad - DOO
115	012	Arthur Th. Ballad - DOO
115	013	Bee Gees 8-Beat - DOO
115	014	Dolce vita Beat - DOO
115	015	Fernando 8-Beat - DOO
115	016	Isla Boni Dance - DOO
115	017	Lost in Fr. 8-Beat - DOO
115	018	Modern T. Disco - DOO
115	019	Reality Ballad - DOO
115	020	Saving all m. 6-8 - DOO



BÖHM Orgeln

KEYSWERK Musikelektronik GmbH

Warbersche Str. 32

31675 Bückeburg

Germany

Tel.: 05722 905088

Internet www.boehm-orgeln.de

E-Mail info@boehm-orgeln.de