

Böhm
ORGELN | KEYBOARDS

SEMPRA 2.0

Installation and Playing Instructions



www.boehm-organs.com

Star Collection 1 – Style pack for SEMPRA 2.0 – Installation and playing instructions

Version 1.00, 08.01.2022

Art.-Nr. 42232AE

The information contained in this documentation may be changed without announcement and are subject to change without notice by Keyswerk Musikelektronik GmbH & Co. KG does not represent an obligation.

The description contains the current state of information at the time of going to press.

Changes of technical details compared to the descriptions, the information and illustrations in this manual are subject to change without notice.

Keyswerk Musikelektronik GmbH assumes no liability for program errors and for incorrect information in the documentation and its consequences.

© Keyswerk 2022

All rights reserved

Responsible for the content of this website

KEYSWERK Music Electronics GmbH

Warbersche Str. 32

31675 Bückeburg

Germany

Phone: 05722 - 905088

Fax: 05722 - 287555

Internet <http://www.keyswerk.de>

E-mail info@keyswerk.de

Content

General	4
Installation.....	4
How to find the data?.....	5
Overview Star Collection 2	8

General

We are pleased that you are expanding your SEMPRA 2.0 with the **Star Collection** software. Our artists have collected a lot of material. The packages **Star Collection 1** and **2** contain 32 styles each. For each Style there is a SONG with 4 Style-Basic registrations (One-Touch Presets).

These styles are generally very universal. Some of the Intro and Ending patterns for variations 3 and 4 are based on popular tunes. Some styles have special features. For example, it can happen that in variation 1 no bass is played in order to have a longer intro, or in other styles a variation is used as a so-called "bridge" (comparable to the middle section or trio in a song). Such a "bridge" seems to take an inappropriate special position within the 4 variations at the first moment. But if you play a suitable title you are happy to have a suitable accompaniment for this special passage.

Surely you will notice when listening to the styles how much detail work has gone into the instrumentation of the intros and endings to variations 3 and 4. Your SEMPRA can use separate playing parameters for intros and endings. This is especially interesting for highlighting certain leading elements of the arrangements only in the intro or ending. Often this has been applied in the form of timbre change, dynamic gradation, change of range, reverb content, etc..

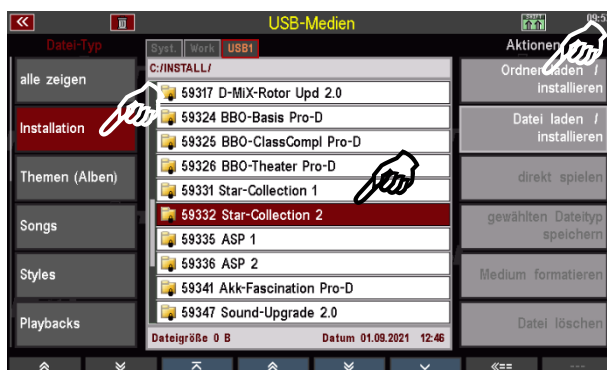
Installation

The styles are installed in the instrument from the USB stick with the factory data that belongs to your SEMPRA.

Attention: If you have received the package as an "arc" file (archive file) by email, please first copy this file on the PC into the top directory of your factory data stick (or another USB stick, which must however be formatted on your SEMPRA). When you insert the stick into the SEMPRA, the system recognizes the archive file and asks you whether the archive should be unpacked. Confirm with ENTER. The installation folder for the "**Star Collection 2**" package is now created on the stick (we recommend that you delete the arc file from the stick again after installation, otherwise you will always be asked whether the file should be unpacked when you insert the stick in the future).

You can now proceed with the actual installation on the SEMPRA:

- Insert the USB stick with the installation data into one of the USB sockets of your SEMPRA.
- Press the **[USB]** button to open the USB menu in the display.
- Tap the **Installation** data type on the left (the field is displayed in red).
- Place the cursor on the "**59332 Star Collection II**" folder using the data wheel or the up/down cursor keys (but do not open the folder!).
- Tap the "**Load/Install folder**" field on the right side.



- The display asks whether you really want to install the data. Confirm with **[Enter]**.
- The styles are now loaded. You can then exit the USB menu again (press the **[ESC]** or **[USB]** button).

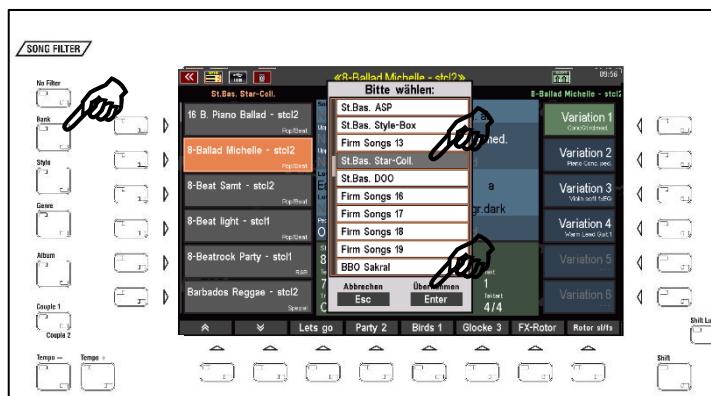


Attention: Please note that factory data, including the Star Collection packages, are always installed on an **account-specific** basis. If you use additional user accounts on your SEMBRA and the Star Collection styles are also to be used in these accounts, you may have to perform the installation again for these additional accounts!

How to find the data?

The "Star Collection" SONGS with the example presets can be found in the Firm SONG Bank 14 "St.Bas. Star-Coll.". Call up this bank e.g. via the **SONG filter** button **[Bank]** (press 2x, if not already selected) and then scroll to the corresponding bank position.

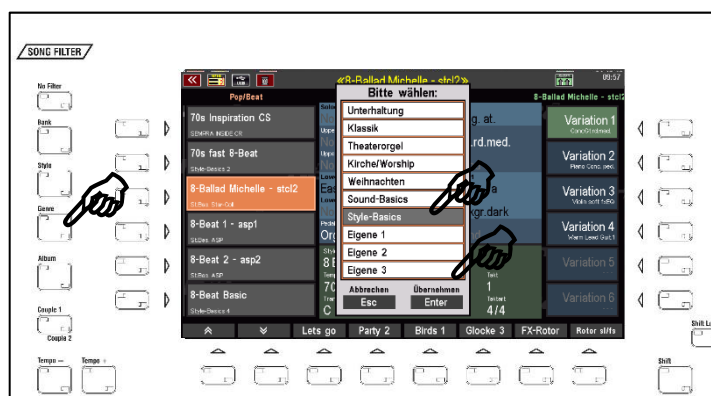
Confirm with **[Enter]**. The SONG list on the left of the display now shows the **Star Collection** SONGS.



Alternatively, you can call the **STYLE BASICS** genre for the SONG list. All **Star Collection** SONGS are assigned to this genre.

Press the SONG filter button **[Genre]** (press 2x if necessary, if not already selected) and select the genre "**Style Basics**" from the list.

Confirm with **[Enter]**.



The SONG list on the left now shows the SONGS of the genre "Style Basics", here among others the Star Collection SONGS.

SONGS of the Star Collection packages can be recognized by the abbreviation **stcl1** or **stcl2** in the SONG name.

You can find the **Star Collection** SONGs also with activated genre "**Style Basics**" and together activated SONG filter buttons **[STYLE]** + **[GENRE]**:

- First, tap the SONG filter button **[Genre]** twice. The list for selecting the SONG genres appears in the display.

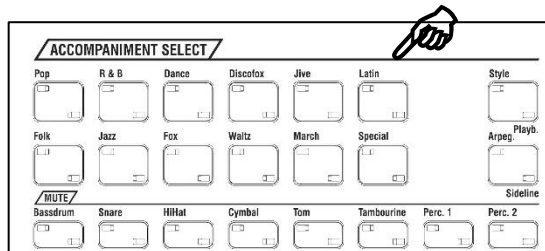


- Select the Style Basics genre here and confirm with **[Enter]**.

- Now switch on the two SONG filter buttons **[Style]** and **[Genre]** in combination (the LEDs in both buttons light up).

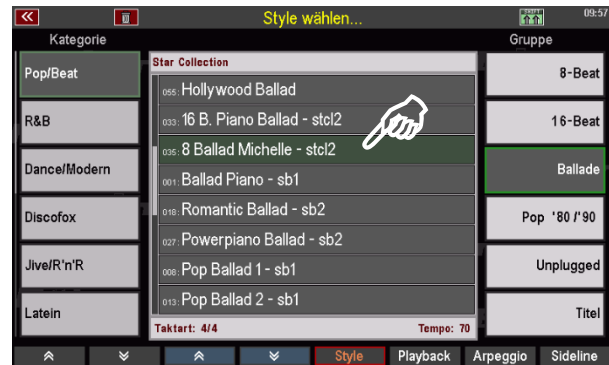


- The SONGs now appear in the SONG lists of the corresponding accompaniment categories, which you can select via the 12 category buttons in the **ACCOMPANIMENT SELECT** group.



The **Star Collection** styles occupy the firm style bank 14 (Star Collection). They are assigned to the corresponding categories and subgroups in the Style selection.

Styles of the Star Collection 1 and 2 packages can be recognized by the abbreviation "**stcl1**" or "**stcl2**" behind the style name.



Overview Star Collection 2

Styles in Firm Style bank 14 "Star Collection"

SONGS in Firm SONG bank 14 "St.Bas. Star-Coll."

Bank	Number	Name
114	033	16 B. Piano Ballad - stcl2
114	034	Twilight 6-8 - stcl2
114	035	8 Ballad Michelle - stcl2
114	036	8-Beat Samt - stcl2
114	037	Barbados Reggae - stcl2
114	038	Bayernpolka Musi - stcl2
114	039	Bossa Sunshine - stcl2
114	040	Chanson d amour - stcl2
114	041	Christmas Blues - stcl2
114	042	Disco Fischer - stcl2
114	043	Disco Venus - stcl2
114	044	Flieder Fox - stcl2
114	045	Rumba 2-Gitarren - stcl2
114	046	Rumba der Nacht - stcl2
114	047	Slow Waltz soft - stcl2
114	048	Spanish Night - stcl2
114	049	Swing Lady Tramp - stcl2
114	050	Swinging Beat - stcl2
114	051	Tanze Samba - stcl2
114	052	Tears soft Ballad - stcl2
114	053	Latin Tequila - stcl2
114	054	Thank for music - stcl2
114	055	Riddle Dance - stcl2
114	056	Tijuana Swing - stcl2
114	057	Time is t. 8-Rock - stcl2
114	058	Top of the w. Country - stcl2
114	059	Uptown Beat - stcl2
114	060	Walk of Twist - stcl2
114	061	When y. soft Disco - stcl2
114	062	Winnetou - stcl2
114	063	Wonderful W. 6-8 - stcl2
114	064	Yellow R. Beat - stcl2



BÖHM Organs

KEYSWERK Musikelektronik GmbH

Warbersche Str. 32

31675 Bückeburg

Germany

Tel.: +49 5722 905088

Internet www.boehm-organs.com

E-Mail info@boehm-organs.com