



Installation and playing instructions



SEMPRA

www.boehm-organs.com

Style Box 1 for SEMPRA - Installation and playing instructions

Version 1.00

Art no. 59161

Last update: 04.05.2019

The information contained in this documentation may be changed without notice. announcement and are subject to change without notice by Keyswerk. Musikelektronik GmbH does not represent an obligation.

Changes of technical details compared to the descriptions.

The information and illustrations in this manual are subject to change without notice. The Keyswerk Musikelektronik GmbH cannot be held liable for program errors and for incorrect information in the documentation and its consequences assume no liability.

© Keyswerk Musikeletronik GmbH 2019

All rights reserved

Responsible for the content:

KEYSWERK Musikelektronik GmbH

Warbersche Str. 32

31675 Bückeberg

Phone: 05722 - 905088

Fax: 05722 - 287555

Internet www.boehm-orgeln.de

E-mail info@boehm-orgeln.de

content

General information	4
prerequisites.....	4
Installation.....	5
Where can I find the Style Box data?	6
Overview STYLE BOX 1.....	7
STYLES.....	Fehler! Textmarke nicht definiert.
SONGS	Fehler! Textmarke nicht definiert.

General information

STYLE BOX is a new style series for all Böhm-SEMPRA organs and keyboards.

Each pack in this series contains 16 styles, each with a specially arranged SONG, containing four one-touch presets adapted to each of the four style variations. All styles and SONG presets were professionally arranged by BÖHM specialist Claus Riepe.

Whether traditional swing and fox rhythms, country and Latin styles, soulful ballads or groovy dancefloor beats - the AMADEUS STYLE BOX contains everything.

All rhythms are well balanced, instrumented, sounding round and powerful and are arranged in a musically meaningful and flexible way. It's fun to play straight away!

This package contains the first STYLE BOX sequence. A detailed list of the included styles, presets and sounds can be found in the appendix to these installation and play instructions.

prerequisites

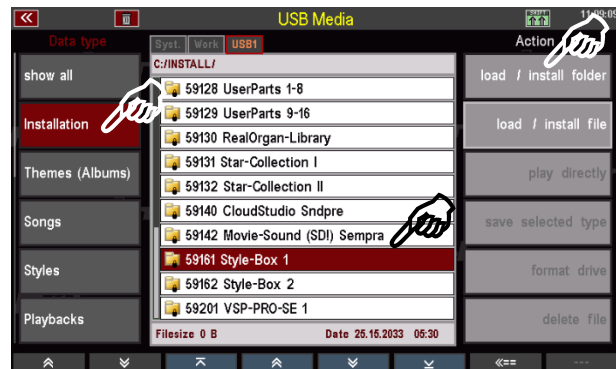
To ensure that the presets sound exactly as they were programmed, your SEMPRA should be equipped with the drawbar sound module RealOrgan 2.0 and the DSP extension for Amadeus2 (Art. No. 41115).

If these extensions are not available, there may be slight deviations in some presets if drawbar sounds or Amadeus effect sounds (FX sounds) have been used.

Installation

The Style Box 1 data is supplied on the USB stick belonging to your SEMBRA and has to be installed into the instrument from there:

- Insert the USB stick into one of the USB sockets on your SEMBRA.
- Press the **[USB]** button to open the USB menu in the display.
- Tap on the **Installation** data type on the left (the field is displayed in red).
- Use the **data wheel** or the **up/down cursor keys** to move the cursor to the "59161 Style Box 1" folder (do not open the folder!).
- Tap on the "**Load/install folder**" field on the right.
- The display asks if you really want to install the data. Confirm with **[Enter]**.
- The data will now be loaded. You can then exit the USB menu again (press **[ESC]** or **[USB]**).



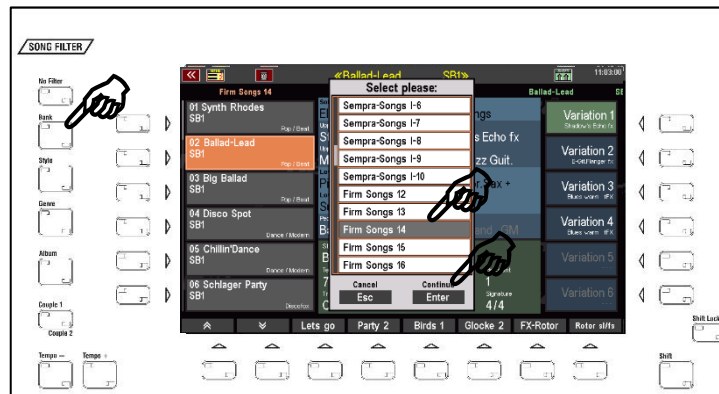
The data of the STYLE BOX 1 are now loaded and can be used.

Attention: Please note that factory data, including the Style Box, are always installed account specific. If you use additional user accounts on your SEMBRA and the style box data is to be used in these accounts as well, you may have to perform the installation again for these additional accounts!

Where can I find the Style Box data?

The **Style Box SONGS** with the presets can be found in the **Firm SONG bank 14**. Call up this bank e.g. via the **SONG filter** button [Bank] (press twice if not already selected) and then scroll to the corresponding bank position.

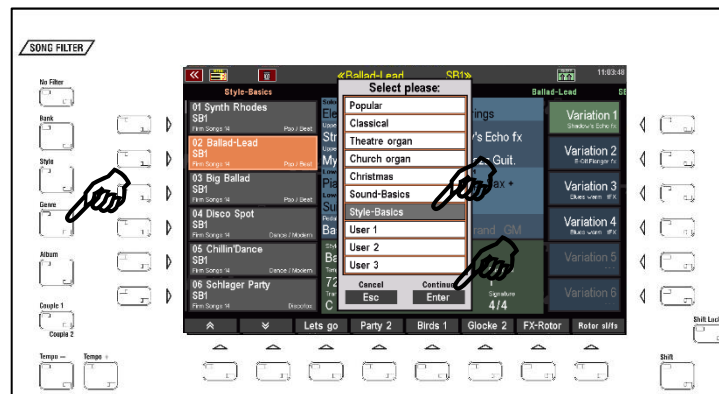
Confirm with **[Enter]**. The SONG list on the left side of the display now shows the SONGS of Firm bank 14 (Style Box).



Alternatively, you can call the **STYLE BASICS** genre for the SONG list. All Style Box SONGS are assigned to this genre.

Press the SONG Filter button **[Genre]** (press twice if necessary, if not already selected) and select the genre "Style Basics" from the list.

Confirm with **[Enter]**. The SONG list on the left now shows the SONGS of the genre "Style Basics", here among others the Style Box SONGS.



SONGS of the Style Box packages can be recognized by the abbreviation **SB1, SB2...** in the SONG name.

The **Style Box STYLES** occupy the Firm Style Bank 12. They are assigned to the corresponding categories and sub-groups in the style selection. Style Box Styles can be recognized in the style selection by the abbreviations **SB1, SB2...** in the style name.



Overview STYLE BOX 1

STYLES

Bank	Nummer	Name
112	001	Ballad Piano SB1
112	002	Country Beat SB1
112	003	Dance Hit SB1
112	004	Disco Chocolate SB1
112	005	Disco-Fox SB1
112	006	Jazz Brush SB1
112	007	Kingdom Pop SB1
112	008	Pop Ballad SB1
112	009	Samba Organa SB1
112	010	Samba do Brazil SB1
112	011	Simple Beat SB1
112	012	Sl.String Waltz SB1
112	013	SlowRock Sax SB1
112	014	Swing Movie SB1
112	015	Swing fast SB1
112	016	Swingin` Easy SB1

SONGS

Bank	Num	Name	
114	001	Synth Rhodes	SB1
114	002	Ballad-Lead	SB1
114	003	Big Ballad	SB1
114	004	Disco Spot	SB1
114	005	Chillin'Dance	SB1
114	006	Schlager Party	SB1
114	007	Sherwood Rock	SB1
114	008	Coocky Sax	SB1
114	009	Lounge Samba	SB1
114	010	Organ Samba	SB1
114	011	Sl.Jazz-Combo	SB1
114	012	Swing-Trumpet	SB1
114	013	Zacharias	SB1
114	014	Big Big-Band	SB1
114	015	Country Truck	SB1
114	016	Epic Waltz	SB1



BÖHM Organs

KEYSWERK Musikelektronik GmbH

Warbersche Str. 32

31675 Bückeburg

Phone: 05722 905088

Internet www.boehm-orgeln.de

E-mail info@boehm-orgeln.de